

# FAIRWAY ESTATES

See the Dream

## Live the Dream

Design & Build your next home

**\*Drive your golf cart  
from your  
garage to the  
tee-box or the  
Clubhouse Café,**



### Phase 2 available

**w/3 super premium  
2+ acre sites  
Home sites 44K—123K**

#### Phase I - One Acre

**Golf course front lots:**

**2200 sq ft minimum**

<b>Lot #1</b>	<b>\$54,900</b>
<b>Lot #2</b>	<b>\$54,900</b>
<b>Lot #4</b>	<b>\$54,900</b>

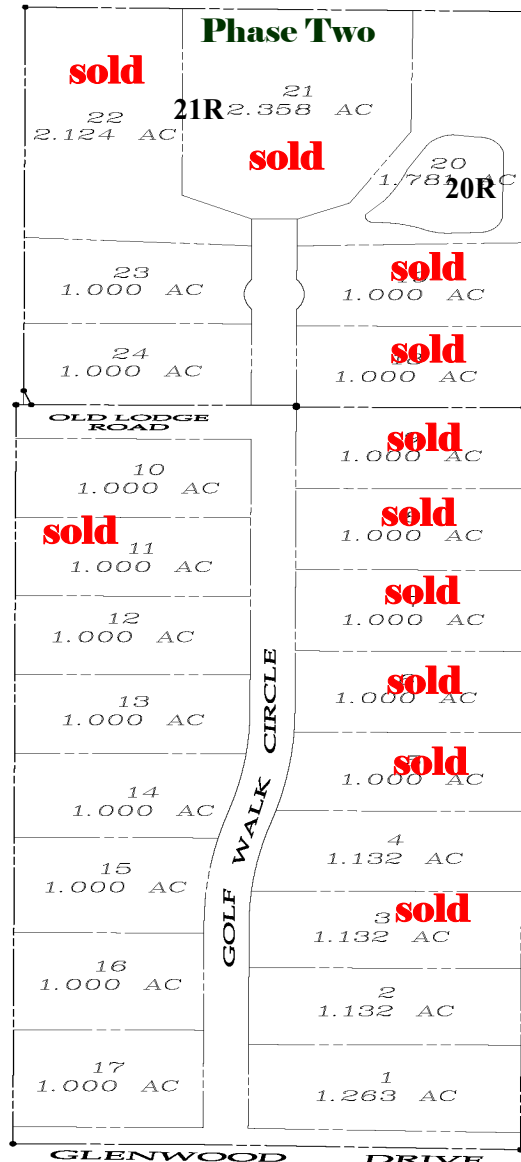
**Golf view lots - 1800 sq ft minimum**

<b>Lot # 10</b>	<b>\$42,900</b>
<b>Lot # 12</b>	<b>\$41,900</b>
<b>Lot # 13</b>	<b>\$40,900</b>
<b>Lot # 14</b>	<b>\$41,900</b>
<b>Lot # 15</b>	<b>\$41,900</b>
<b>Lot # 16</b>	<b>\$41,900</b>
<b>Lot # 17</b>	<b>\$42,900</b>

#### Phase 2 One - two+ acres

**2400 - 3000 sq ft minimum**

<b>Lot # 20</b>	<b>\$122,900</b>
<b>Lot # 23</b>	<b>\$ 43,900</b>
<b>Lot # 24</b>	<b>\$ 43,900</b>



**Texoma's best kept secret**  
Call—Steve Salem 903 327-5544  
[www.salemdesign.us](http://www.salemdesign.us)

**Phase One**